

2018-19



Meadowhead School

Academy Trust

Learning and achieving together



Leadership at all levels is highly ambitious for all students, and leaders are successfully committed to the school's clear vision and continued improvement.

OFSTED

Welcome to Meadowhead School

I am exceptionally proud to be the Headteacher of Meadowhead School.

At Meadowhead we have a clear vision for the future. We are determined that our students are able to achieve well and leave us as confident, compassionate and articulate individuals with the skills to support them through the rest of their lives. Through high standards in teaching and pastoral care we expect to prepare our students well for entrance to higher education, high quality employment and the future careers of their choice.

We have fostered a caring, supportive and happy environment which will encourage our students to flourish. In terms of behaviour, uniform and school standards we have high expectations. We expect students to wear the full uniform correctly, attend well, behave respectfully to others and to work hard.

We also believe that education is more than just academic success and aim to develop the whole person with a broad, balanced curriculum, a wide range of extra-curricular activities which we encourage all students to take part in, as well as a wide range of events during the year.

The opportunities we provide are first class. In 2009 we founded the Meadowhead Community Learning Trust and through this we work collaboratively with our community; feeder primary schools, Sheffield College, both universities in Sheffield and 21 local and national business partners. Our day to day school life is enriched by visits and activities to provide our students with incredible career opportunities and to improve life chances.

Meadowhead's impressive facilities provide students with a state-of-the-art learning environment. The school buildings now include an excellent Sixth Form complete with brand new IT and private study facilities which help students to develop independence and discipline in their learning.

We thank you for showing an interest in what our school has to offer your child. Choosing a secondary school is one of the most important decisions you will make and we hope that this prospectus and a visit to the school will provide you with the necessary information to help you make your choice.

Please do not hesitate to contact us to arrange a visit – you will not be disappointed.

Mrs Kam Grewal-Joy
Headteacher



A learning community

We value the positive support that we receive from our parents and the wider community. We welcome the close collaboration and shared work with our feeder primary schools in many subject areas, notably English, mathematics, science and languages. Many parents take the opportunity to be actively involved through curriculum evenings, subject workshops for families and adult evening language classes throughout the year.

I have really enjoyed my first year at Meadowhead – I've made new friends and learnt a lot.

Y7 STUDENT

The Meadowhead community

We are dedicated to working closely with our community which is demonstrated through the strong partnership links we have developed with the 31 education and business members of our Meadowhead Community Learning Trust over the past 9 years. This partnership is enabling us to respond to the needs of the local community and offer quality education, support, bespoke enrichment and employment opportunities for all students aged 3 to 19.

Leaders also make good use of partners in the Meadowhead Community Learning Trust to support improvement and also to increase the provision and guidance available for students at key times in their education.

OFSTED

Caring for the individual

We place great emphasis on ensuring that each individual feels part of the school, feels important, feels cared for and feels that they have a contribution to make.

The tutor is responsible for a form group and has a key role in helping students achieve their full potential. Each Year Group has its own Year base overseen by the Head of Year, Pastoral Manager, Tutors and link Senior Leaders.

I have really enjoyed the one-to-one time with my daughter and the opportunity to learn together in a relaxed environment at the family workshops.

Y7 PARENT

Achieving together

Our KS4 results show a consistent pattern over time, with the vast majority of students making very good progress to meet or exceed their own personal targets. For many years the percentage that achieve at least 5 A* to C grades including English and mathematics has been significantly above the national average.

Our students are prepared to respond to new opportunities, and for their future development. We are proud that recent figures show that nearly 100% of students embarked on further education or training or employment after leaving Meadowhead. A significant proportion of Meadowhead students go on to succeed at the highest levels at university.

We promote and celebrate achievement and success for all, through Phoenix Awards, celebration assemblies, the Record of Achievement presentation at the end of Year 11, to both the GCSE presentation, and our annual A Level presentation ceremony.

Students have good relationships with staff and feel well supported and cared for.

OFSTED

Learning together

We encourage students to take responsibility for their own learning. In Form Tutor time, they are helped to set and review their own personal learning targets. In other lessons they use Study Planners to organise their learning and homework and monitor their own progress with the help of their parents.

We seek to maintain the highest standards, supported by our system of Behaviour for Learning. This offers positive rewards for the majority, but where necessary a series of consequences to promote positive behaviour and attitudes to learning.

Students are encouraged to take responsibility in maintaining high standards of behaviour and appearance, following our agreed Code Of Conduct. They show a genuine pride in the school and never fail to impress visitors. Students contribute to making the school a better place through Year Councils and the School Council. Older students are trained to be Student Mentors and play a key role in helping younger students.

Staying safe and healthy

Safeguarding is at the forefront of all that we do and is deemed outstanding by Ofsted. We provide clear support and guidance in a safe caring community, enabling our students to feel happy, confident and secure. The school building and routines have been designed with safety and security in mind.

The school promotes healthy lifestyles with a commitment to healthy eating. Year 7 have their own lunch break and convenient access to the healthy food available in the Café Olé.

Students are also able to access sporting facilities at the refurbished Graves Leisure Centre as part of the school's enrichment programme.

Students enjoy coming to school. They feel very safe in an exceptionally caring and supportive environment. Staff take full account of potential risks and take extremely effective steps to keep all students safe and cared for.

OFSTED



Personalising the Curriculum

Our Meadowhead Signature Curriculum is designed to inspire and engage all learners. We aim to provide the very best learning opportunities for all students with a broad and balanced curriculum that meets individual needs within a vibrant, forward looking community.

See the school website for detailed information about the curriculum.

In Years 7 and 8 students follow a broad range of National Curriculum subjects, taught at appropriate levels for the individual. In many subjects students are taught in groups based on their ability. From Year 9, the curriculum is tailored to meet individual needs and personal choice, aiming to ensure that all students enjoy their lessons and fulfil their potential. This might be

through a full GCSE programme, to a blend of vocational and work-related opportunities.

Our structures are designed to allow students to take assessments at the most appropriate time for the individual, and to increase opportunities to follow courses beyond GCSE.

e-Learning is widening our scope for innovative teaching and on-line assessments. Our Student Portal is opening up a world of

learning opportunities and ways of communicating.

Parents can view up to date information about their child's reports, attendance and homework through the Parent App.

The structure of the curriculum is strongly matched to the needs of students and so benefits their achievement and personal development. Students have excellent experiences at school and are very well prepared for their next phase in education, training or employment.

OFSTED



Planning for the future

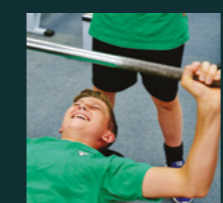
In every year students learn to plan ahead. We take care in helping students, with the support of their families, make positive choices for their future. In particular students receive individual advice and guidance about future education and careers opportunities beyond Meadowhead School.

Students have many opportunities to take on responsibilities and develop leadership. This can be through volunteering for paired reading with younger students, taking up enrichment opportunities or through being a mentor, for example.

OFSTED

Extending opportunities

We are proud of the depth and variety of extended opportunities that we offer outside regular school hours. Students are encouraged to do something extra, and take a lead in helping others to participate.



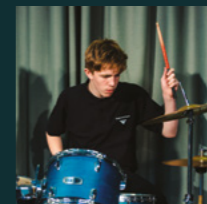
Sports facilities
Our excellent sports facilities allow opportunities to participate for fitness and enjoyment, or to compete in a wide range of sports and games. We have an excellent record of participation and sporting success, locally and nationally.



Development
We encourage students to develop personally by taking responsibility and taking a lead, particularly as Student Mentors and Sports Ambassadors.



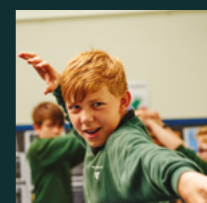
Holiday schools
Holiday schools – from fun events to additional courses and qualifications.



After school
Homework Clubs, twilight courses, extra lessons, revision sessions, additional qualifications.



Experiences
Residential experiences all over the world focus on languages, sport, outdoor pursuits, performing arts and citizenship.
We have many additional experiences linked to the wider curriculum: theatre trips, field courses, sporting challenges, competitions and fun events are delivered by all curriculum areas.



Reputation
Meadowhead has a deserved reputation for the quality and variety of its music and its performances, from classical to rock and pop, from soloists to orchestras and bands. The Trust Choir, linking with our feeder primary schools is a highlight. Large numbers of students choose to study drama and also produce excellent performances – from drama clubs to “Oliver” and Shakespeare.

An international vision



Meadowhead School specialises in the teaching of languages. We teach French, German and Spanish to A Level with enrichment activities in many other languages, and adult evening language classes throughout the year.

In 2004 we first achieved the British Council International School award in recognition of the growing global and multicultural dimension of our curriculum and extra-curricular opportunities.

We were proud to be the first school in Sheffield to have been granted this prestigious award for 4 consecutive

terms, and again for a 5th term in 2016-2019.

We have established International project links and have led several student exchange visits, staff training and Erasmus+ projects with schools in China, Finland, France, Germany, Norway, Poland, Slovenia, Spain, and Sri Lanka. Other study visits and curriculum links across the world have also involved schools in Canada, Chile, Holland, Italy, Qatar, Russia, South Africa and the USA across a wide variety of subject areas.

Key notes from Ofsted

On the curriculum

Achievement in English and mathematics is particularly strong.

Teaching

Leaders and governors have worked with the teachers to ensure that students receive good or outstanding teaching over time.

Enrichment

Students take part in a wide range of enrichment opportunities or work experience related to their studies.

Leadership

Senior leaders and governors, led by the head teacher, have established a culture of integrity, ambition and high expectations.

Advice & Guidance

Careers' advice and guidance are comprehensive and effective in supporting the progression of students aged either 16 or 18. Students appreciate this advice and support which helps them to make appropriate choices.

Atmosphere

A very positive ethos and learning environment.

Students' spiritual, moral, social and cultural development is a strength.

The behaviour of students is good.

The school's work to keep students safe and secure is outstanding.

Sixth Form

Leadership is a strong feature of the Sixth Form. Leaders are highly ambitious for the Sixth Form provision and for securing the best life chances for students.

The Sixth Form provides good care and support for students in terms of their personal development, health and well-being. Students are very appreciative of this and are proud to be in the Sixth Form.

The Sixth Form already makes a strong contribution to provision and to the school's ethos. Strong teaching means that students achieve well.

Sixth Form at Meadowhead

We are proud of our A level results, already above the national average, and that so many students were able to progress onto university.

Our latest Ofsted inspection highlighted the real success of our new Sixth Form, reflecting the excellent experience available to students in our ground-breaking development.

We are confident that our new state of the art accommodation facilities will now enable even more students to flourish in our Sixth Form.



Building for the Future

Meadowhead School has been designed to enable students of all abilities to have a first class learning experience.

All of our curriculum is delivered in quality specialist accommodation, fully supported by the latest ICT facilities.

We are delighted to report that our new Sixth Form centre opened in November 2017. This 2.4 million extension offers state-of-the-art facilities, enhanced capacity, silent and group study space, social space and a café, forming an inspiring learning environment from which our specialist A-Level teachers and Sixth Form students benefit to ensure that all learners reach their full potential.



Meadowhead School Academy Trust

Learning and achieving together

Dyche Lane, Sheffield, S8 8BR
T: 0114 237 2723 F: 0114 283 9855

For more info about our school visit
www.meadowhead.sheffield.sch.uk



At Meadowhead, you always felt supported with whatever you needed, from your teachers to the Sixth Form team.

Y13 STUDENT

